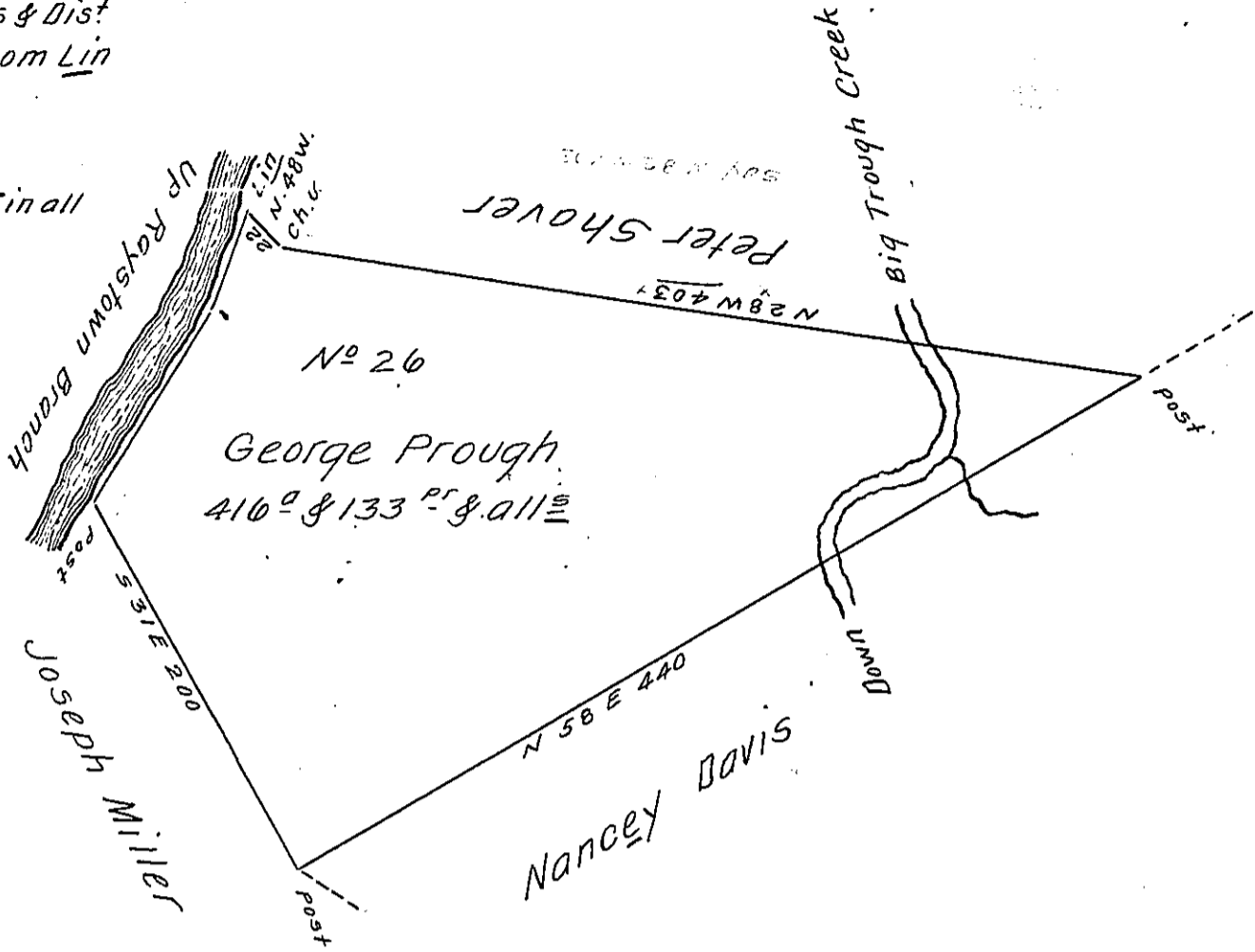


FORM No. 1.

The Courses & Dist
up River from Lin
to Post

S. 16 W 40
S. 28 W 106 1/2
146 1/2 in all
to Post



Situate in Hopewell Township Huntingdon County Containing
Four Hundred & Sixteen Acres & One Hundred and thirty three
perches & the Usual Allowance for Roads. Surveyed the Tenth
Day of May 1794. In Pursuance of a Warrant granted to George
Prough Dated the Eighteenth of March 1794.

To Daniel Brodhead Esq^r S.G.

John Canan D. S.

IN TESTIMONY that the above is a copy of the original remaining on file in
the Department of Internal Affairs of Pennsylvania, made
conformably to an Act of Assembly approved the 16th day of
February, 1833, I have hereunto set my Hand and caused
the Seal of said Department to be affixed at Harrisburg,
this nineteenth day of October 1910.

Henry Horck
Secretary of Internal Affairs.